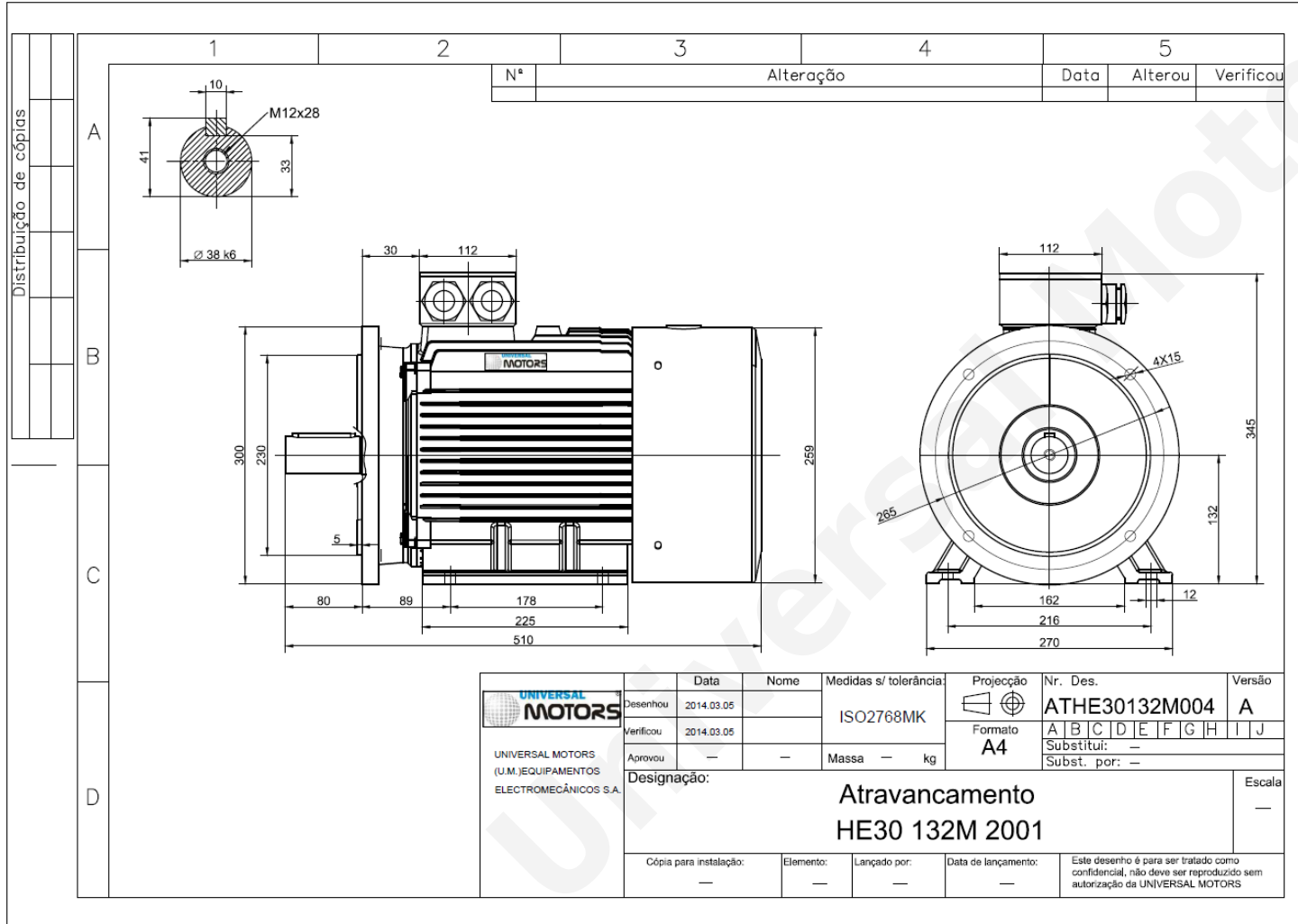




TECHNICAL DATA

Three Phase Electric Motors - Cast Iron Frame
 HE30 132 M2 6 IE2
 5.5 kW / 7.5 Cv
 965 RPM



Motor type: **HE30 132 M2 6 IE2**
 Output: **5.5 kW / 7.5 Cv**
 Speed (min⁻¹): **965 RPM**
 Frequency: **50 Hz**
 Voltage: **400 V**
 Current: **12.3 A**
 Power factor (Cos Ø): **0.75**
 Poles: **6**
 Insulation class: **F**
 Temperature rise Class: **B**
 Efficiency 50%: **85.1 %**
 Efficiency 75%: **86.5 %**
 Efficiency 100%: **86.0 %**
 Torque: **54 N.m**
 Tstarting/Tnominal: **2.0**
 Istarting/Inominal: **7.1**
 Tmaximum/Tnominal: **2.1**
 Noise: **58 Db(A)**
 Weight: **79 Kg**
 Bearing DE: **6308 2Z C3**
 Bearing NDE: **6308 2Z C3**

Regime - S1

Altitude - 1000m

Environment Temperature - 40°C

CONTACTS:

UNIVERSAL MOTORS Tel: +351 252 299 080
 Rua de São Brás,745 Fax: +351 252 299 089
 4480-782 VILA DO CONDE Mail: geral@universalmotors.pt

* References applied only in the UK